



## Decibel® ADA

### Accessible Meetings

Meet Decibel ADA – the spacious office pod redefining inclusivity and collaboration. Whether accommodating two individuals in wheelchairs or one in a wheelchair plus two more, it's the ideal space for teamwork and productivity.



## Differentiators



KEEPING YOU COOL

### QuietFlow™

Our proprietary airflow system is designed to keep you cool, by quietly circulating the air inside the booth, while maintaining acoustical privacy.

REDUCING DECIBELS

### QuietWorx™ Acoustics

Three layers of soundproofing material removes all distractions, giving everyone in the office a moment of peace.



SAFETY FIRST

### FireShield™ System

FireShield™ (Patent Pending) is a heat-activated fire suppression technology available in all our PODs, ensuring fire codes are met while maintaining modularity and flexibility to relocate units.

## Technical Specifications



- **Exterior:** 85.4"H x 86.6"W x 47.8"D\*
- **Interior:** 82.2"H x 81.5"W x 42.9"D\*
- **Door:** 36.4" x 82.4" RH
- **Weight:** 650 lbs
- **Power:** Power Cord for Standard 120v Outlet

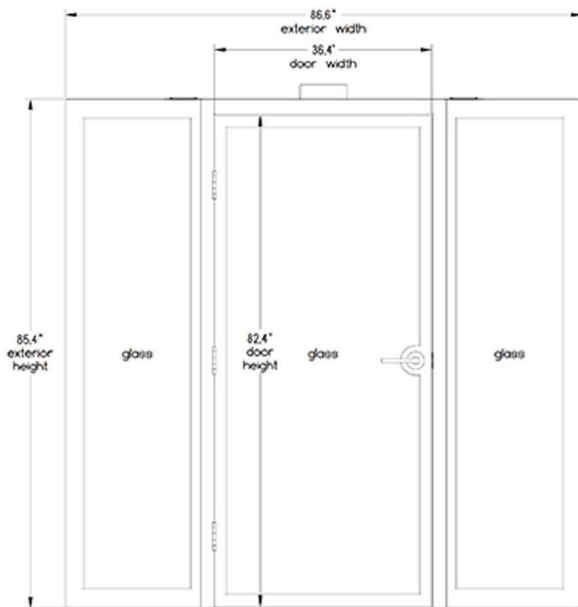
\*Dimensions are approximate

- Quietflow™ Ventilation with quad (4) fans
- Power Outlets & USB Charger
- Commercial grade (3) hinges
- Quietworx™ acoustical door seal
- Optional Fireshield™ Fire Suppression System
- Powered Coated Steel Frame
- Design Patent (Pending)
- Utility Patent (Approved)
- Fire Suppression System Patent (Pending)

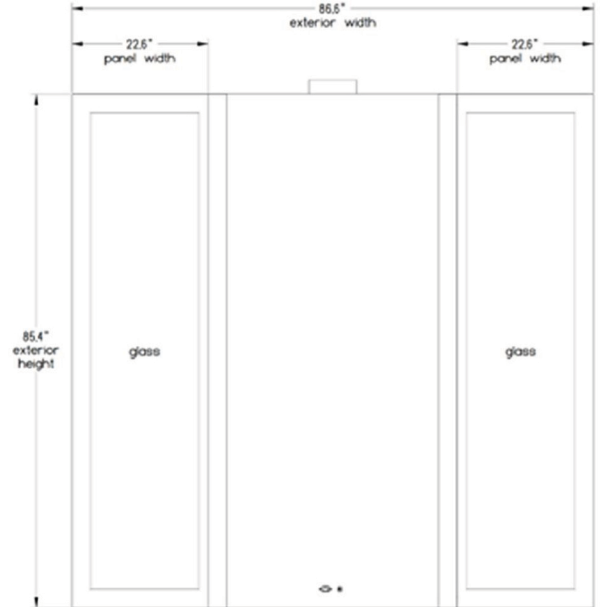


# Privacy That Performs

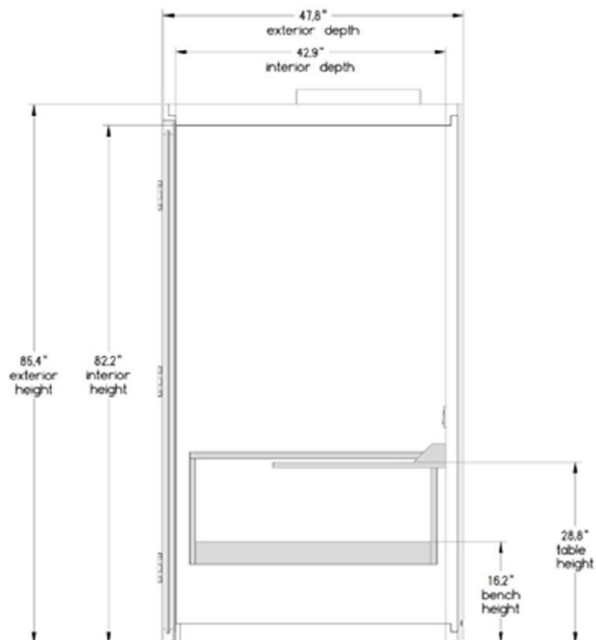
**Front View**



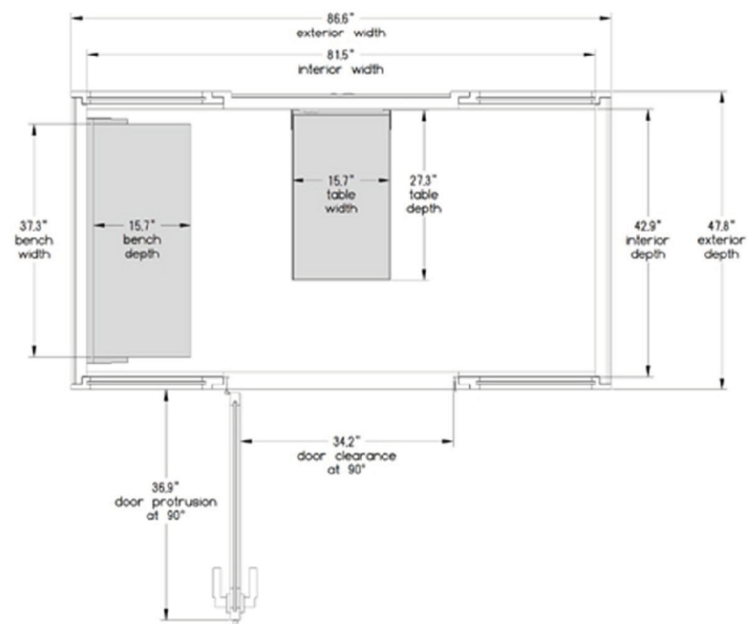
**Rear View**



**Side View**



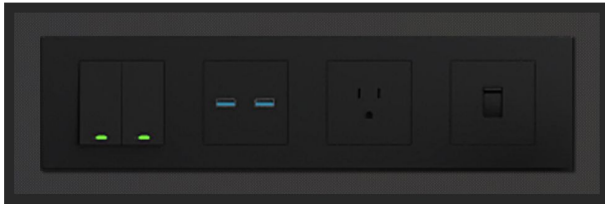
**Top View**





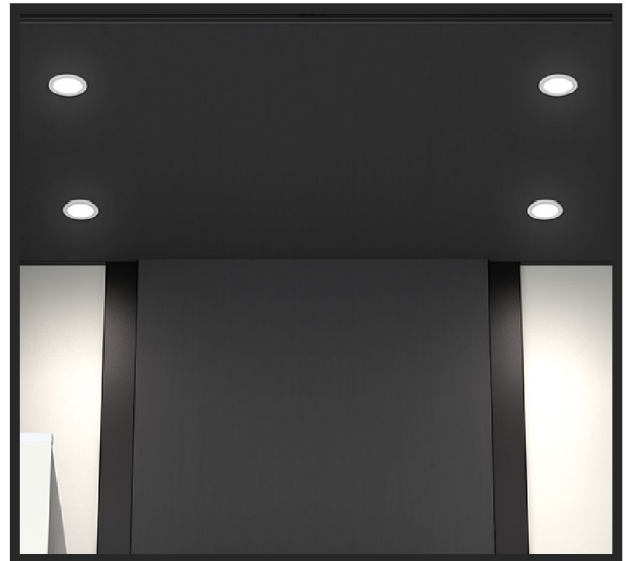
### Wall Mounted Power Module

Customizable power module with switches for lights and ventilation, 110 volt power outlet USB ports and optional data port.



### LED Lighting

4 energy efficient LED lights 3500k lumens (or custom upon request).

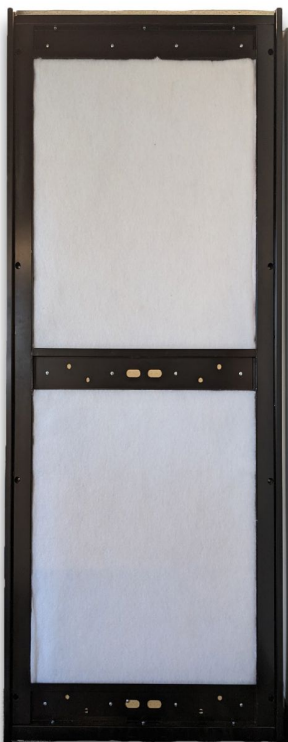


### Plug & Play Power Cord

6-8ft (or longer if required) 3 prong power cord that plugs into a standard 110 volt outlet. Booth draws no more than 5 amps when turned on.



### Removable Side Panels:

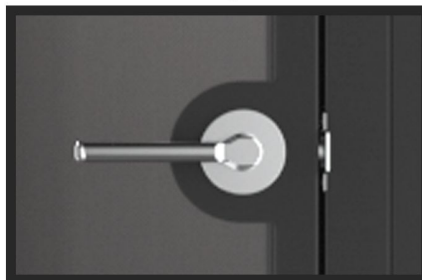


### Heavy Duty Hinges

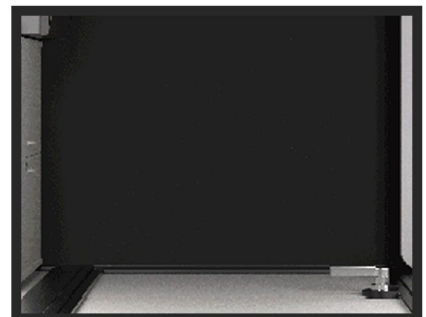


### Latching Door Handle:

Heavy duty latching door handle or optional locking door handle.



**Carpeting:** Charcoal Black carpeting (or custom upon request).



**Rubber Gasket Door:** Rubber gasket door seal designed to tightly seal door for extra soundproofing.





## Privacy That Performs

### Optional Features

#### Counter Top:

Fixed height countertop, can be mounted at standing or sitting position or optional height adjustable for upcharge. Black woodgrain laminate.



#### Quietworx Upholstery:

Over 24 upholstery colors available for the interior walls. Upgrade from the standard felt.



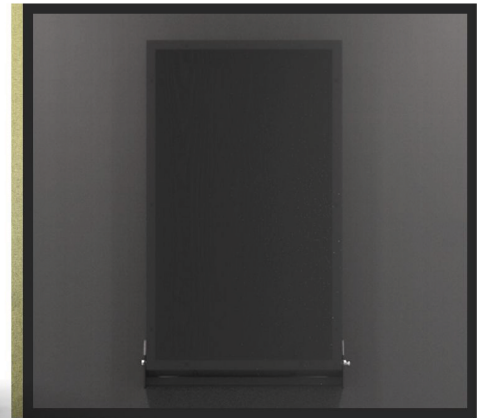
#### Woodgrain Side Panels:

Optional laminate woodgrain finish on the side panels or dry erase board.



#### Height Adjustable Desk:

Optional height adjustable desk with black woodgrain laminate surface



## Optional:

Woodgrain  
side panels



Walnut  
Fiberwood



Unicorn  
White Wood



Planked  
Raw Oak



Planked  
Coffee Oak

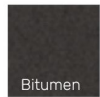


Light  
Grey wood



Black  
Wood Grain

Quietworx upholstery colors



Bitumen



Charcoal



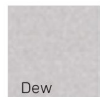
Pewter



Dapper



Light Grey



Dew



Winter



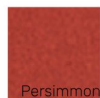
Mink



Espresso



Tomato



Persimmon



Tangelo



Topaz



Cactus



Citron



Eukalyptus



Aquamarine



Aegean



Midnight



Indigo



Purple



Plum



Ruby



Fawn



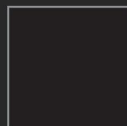
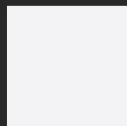
Opal

Whiteboard side panels



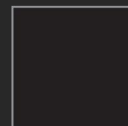
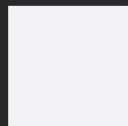
## Finishes:

Frame Color



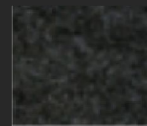
White or Black

Side Panels



White or Black

Interior



Charcoal Felt





Privacy That Performs



Contact us

✉ [info@spaceworx.us](mailto:info@spaceworx.us)

🌐 [spaceworx.us](http://spaceworx.us)

☎ +1 (866) 895-6044

