



MomSpace™ Double

Double the Convenience

Experience the ultimate convenience with MomSpace™ Double. This spacious pod provides ample room for relaxation and offers the option to add a plumbing free sink and mini fridge for a truly seamless pumping experience.

A better way to make your day, productive!

Differentiators



COOL+COMFORTABLE

QuietFlow™

Our proprietary QuietFlow™ system is designed to keep you cool by quietly circulating the air inside the booth while ensuring sound doesn't escape. The design of the Spaceworx QuietFlow™ airflow system allows the fresh air to flow in smoothly, powered by energy-efficient fans, and forcing stale air out through strategically positioned exhaust vents, ensuring that a proper balance oxygen level is maintained throughout the pod.

CLEAN+QUIET

Reducing Decibels

Three Layers of soundproofing material with hygienic water resistant vinyl keeps the booth both quiet and sanitary... empowering the mother to provide for her baby in comfort and quiet.



Differentiators

MODULAR+COMPLIANT

FireShield™ System (Optional)

FireShield™ (Patent Pending) is heat-activated fire suppression technology available in all our Pods, ensuring fire codes are met while maintaining modularity and flexibility to relocate units.



PRIVATE+PRODUCTIVE

Necessities for Pumping (Optional)

Plumbing free sink, electrical outlets, shelf, and mini fridge all located within easy reach simplify pumping at work for moms.

DESIGN IT YOUR WAY

Endless Designs

Create something special with our 3D product configurator, with over 200 possibilities of colors, choices and finishes.



A better way to make your day, productive!

MomSpace™ Double

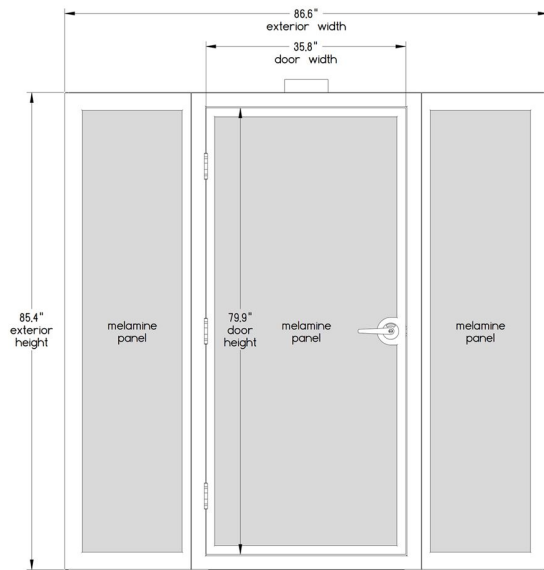
Technical Specifications



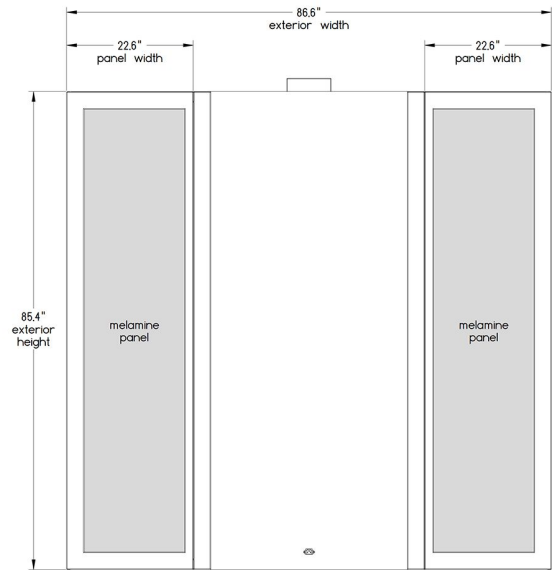
- **Exterior:** 85"H x 87"W x 48"D*
 - **Interior:** 79"H x 82"W x 43"D*
 - **Door:** 36" x 80" RH
 - **Weight:** 1000 lbs
 - **Design Patent (pending)**
 - **Utility Patent (approved)**
 - **Shelf:** Black HPL Rounded with Ergonomic Corners 13"D x 24"W
 - **Side Panels:** Black or White HPL
 - **Interior Panels:** Black or White HPL, Quietworx™ Vinyl Wrapped Upholstery available for upcharge.
 - **Ceiling:** Charcoal Felt
 - **Flooring:** Black Rubber
 - **Quietflow™ Ventilation:** 4 fans-Lighting: 4 Energy Efficient LEDS 3500k
 - **Quietworx™ Door Seal:** Black rubber gasket for acoustical privacy
 - **Power/Data:** Power Cord for Standard 120v Outlet; Wall mounted module above shelf, 110 power volt outlet, usb charger, optional data port.
 - **Heavy Duty Powder Coated Metal Frame:** White or Black
 - **Heavy Duty Commercial Grade (3) Hinges:** Stainless Steel
 - **Heavy Duty Locking Door Handle:** Stainless Steel
 - **Cushioned Bench:** Standard Light Grey Vinyl Upholstery (Quietworx™ Vinyl colors available for upcharge)
- Optional:**
- **Plumbing Free Self Contained Sink:** White or Black Melamine 18"D x 26"W x 41"H*
 - **Mini Fridge:** Black or White 18"W x 25"H x 19"D*
 - **Fireshield Suppression System (Patent Pending)**
 - **Outer Panels:** Wood Grain Laminate or Markerboard Panels
 - **Quietworx™ Acoustical Package including Vinyl Upholstered Interior Panels**

*Dimensions are approximate

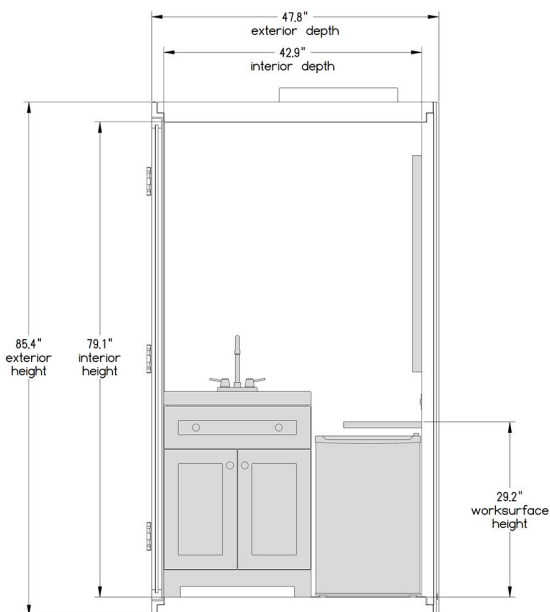
Front View



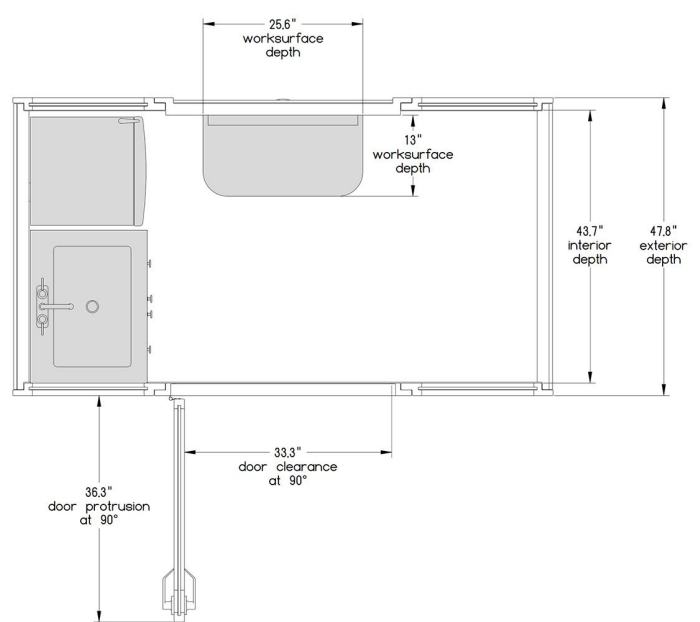
Rear View



Side View



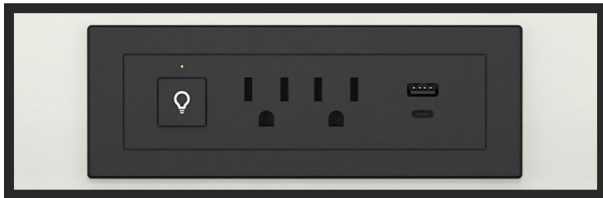
Top View



A better way to make your day, productive!

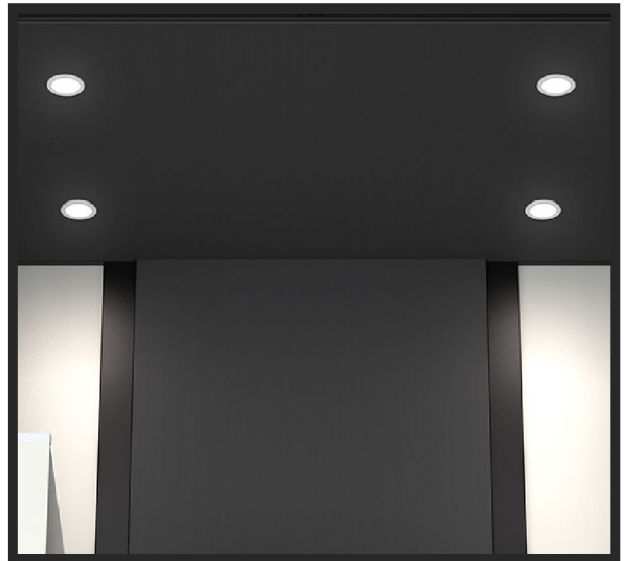
Wall Mounted Power Module

Customizable power module with switches for lights and ventilation, 110 volt power outlet USB ports and optional data port.



LED Lighting

4 energy efficient LED lights 3500k lumens (or custom upon request).



Plug & Play Power Cord

6-8ft (or longer if required) 3 prong power cord that plugs into a standard 110 volt outlet. Booth draws no more than 5 amps when turned on.



Heavy Duty Hinges



Black Rubber Flooring



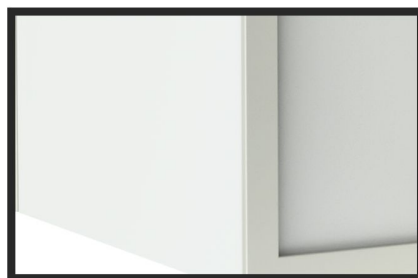
Latching Door Handle

Commercial grade heavy duty stainless steel latching or optional locking door handle.



Quietworx™ Door Seal

Rubber gasket door seal designed to tightly seal door for extra sound-proofing.



Shelf + Mini Fridge (Optional)

Perfect blend of functionality and convenience with our shelf and mini fridge, seamlessly designed to boost productivity and efficiency for moms.



Cushioned Bench

Standard Light Grey Vinyl Upholstery (Quietworx™ Vinyl colors available for upcharge)



Quietworx Acoustics + Hygienic Vinyl Upholstery (Optional)

Over 24 vinyl colors available for the interior walls. An acoustic upgrade from the standard HPL panels.



Woodgrain Side Panels (Optional)

Optional laminate woodgrain finish on the side panels or dry erase board.



Plumbing Free Sink (Optional)

Personalize your space with our sleek, customizable plumbing-free sink.



A better way to make your day, productive!

Optional:

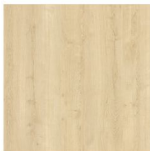
Woodgrain
side panels



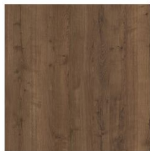
Walnut
Fiberwood



Unicorn
White Wood



Planked
Raw Oak



Planked
Coffee Oak



Light
Grey wood



Black
Wood Grain

Quiteworx Vinyl Colors



Outback



Tomato



American
Beauty



Light Teal



Blue Nile



Regal Blue



Gray



Slate



Beige



Pumice



Reflection



Saddle Tan



Camelback



Very Berry



Magenta



Nasturtium



Persimmon



Deep Clay



Lemon



Parsley



Caribbean



Cobalt



Glacier



Grape



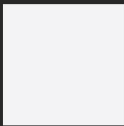
Magenta

Whiteboard side panels



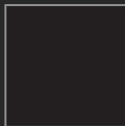
Standard
Finishes:

Frame Color



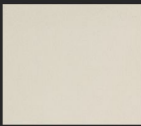
White or Black

HPL Panels
(Interior + Exterior)



White or Black

Bench Vinyl



Lite Grey



A better way to make your day, productive!



Contact us

✉ info@spaceworx.us

🌐 spaceworx.us

☎ +1 (866) 895-6044

Spaceworx® For You