

# DURAMATE™ ADA



Virtual Court Hearings



Telehealth



Attorney-Client Meetings



Impact Resistant



Modular Plug & Play



Cleanable Surfaces

## GENERAL SPECIFICATIONS

**Dimensions:** 85"W x 85"H x 48"D\*

**Weight:** Approx. 1,000 lbs

**Acoustical Rating:** 40-45 Decibel reduction

**Certifications:** UL 962 Certified, UL 94 and ASTM 84 Flammability



802705  
UL 962

## CONSTRUCTION

**Frame:** Correctional powder coated steel structural frame

**Windows:** Unbreakable polycarbonate, 2H scratch resistance, UL 94 v-0 flammability

**Soundproofing:** Durafelt™ (correctional grade, rip, scratch, & tear resistant, ASTM E84 flammability)

**Door:** 36" wide, left hand or right handed. Non removable hinges steel encasement with polycarbonate window, acoustical sealed with gasket, latching handle (optional locking handle)

**Side Panels:** Removable HPL plywood panels with security bolts.

**Countertop:** Heavy duty powder coated steel frame bolted to main frame. Locking access door with 2 cam locks. Concealed power/data outlets inside. Optional sitting or standing height.



**Type:** 2 LED lights

**Color Temperature:** Adjustable between 3,000K-5,000K

**Tamper Resistant:** Polycarbonate security covers



UL 962 Overall Product Certification  
FireShield™ Fire Suppression option (optional)



Designed for maximum air circulation while maintaining soundproofing.  
330 CFM (Cubic feet per minute).  
471 ACH (air changes per hour)



Correctional grade security design  
Minimum exposed bolts, security fasteners for all exposed bolts.

**Tamper Resistant**



**Voltage:** 110-120 volts

**Amps:** 2-3amps

**Plug and Play:** Power cord C13 8ft standard (3ft-10ft cord available)

**Hardwired:** Optional

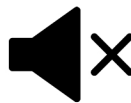
**Power & Data**

## WARRANTIES



**Tuffshield™ Assurance**

Tuffshield™ Assurance.  
3 year overall warranty.  
(see warranty statement for full details and any exclusions.)



**Durafelt™ Acoustics**

Correctional, rip, scratch & impact resistant. Free replacement panels for lifetime of product.

## FEATURES



Heavy Duty  
Door Hinges



Powder Coated Steel  
Door and Frame



Roof Mounted  
Power Cord or  
Optional Hardwired



Felted Back  
Wall Panel



Tamper Resistant  
Lighting



Impact Resistant  
and Fire Retardant  
Acoustical Felt

## OPTIONAL FEATURES



Protective TV  
Enclosure



Clear Impact & Shatter  
Resistant Back Wall



Bolt Down Stool



MaxSecure Door



Locking Countertop



Floor Anchoring Brackets

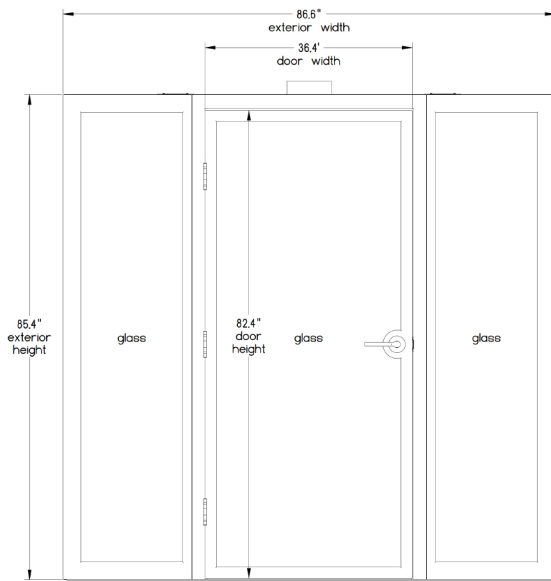


ADA Accessibility

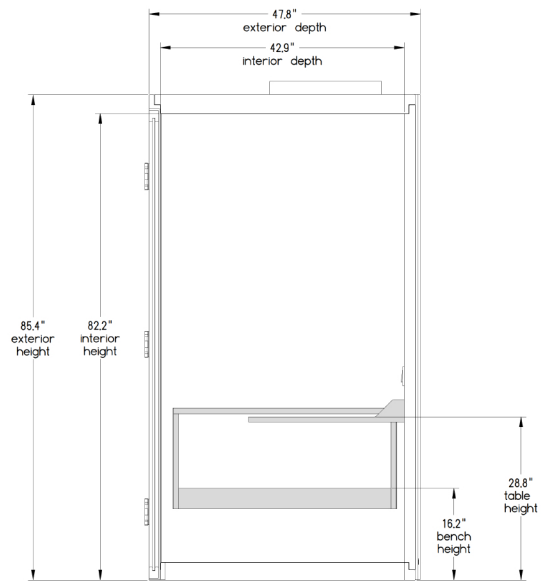


Concealed Power Module  
Inside Countertop

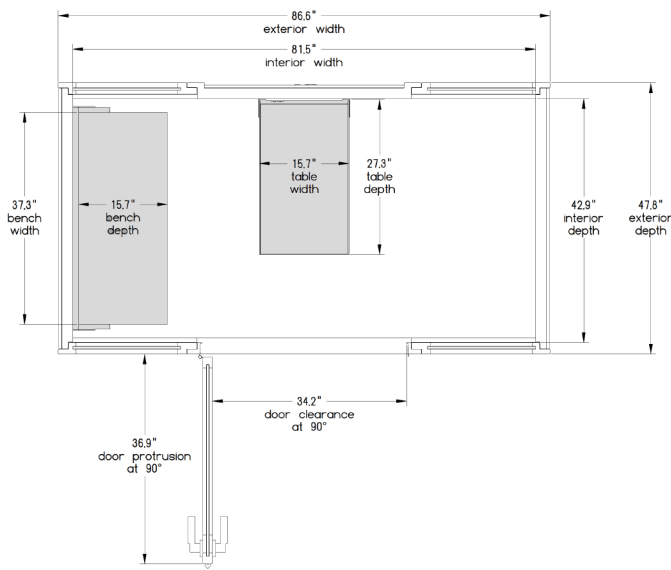
# TECHNICAL DRAWINGS



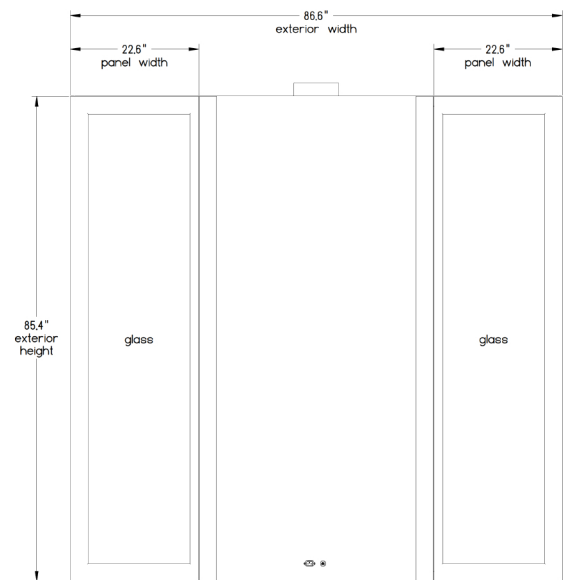
front view



side view



top view



rear view